

# FOB NEWS

Friends of Berry Castle E- Newsletter Spring 2019



Welcome to our latest Spring edition. It's been over a year since we sent out our last e-newsletter. Since then, the information boards have been installed, we've dug into the possible banks, to the East side of the monument and have put together some plans for the coming year.

Our intended approach will be more 'outdoors' based, involving walks and even local restoration community projects, within the Torridge area.

We'd also like to strengthen the ties we have with other local historical groups, through shared events and skills base. By reaching out to others, we can broaden the types of visit and opportunities we can offer.

As well as offering a range of visits to historical sites, we want to become more involved in the research and surveying of sites, assisting Historic England in their work. We hope that this will offer a new perspective to our usual visits, providing an opportunity for supporters to not only gain an understanding of a site, but also help gather information about its condition.

## Historic England Site Survey Training

On **Monday 11<sup>th</sup> March**, we will be running site survey training, for anyone who wishes to be involved in assisting Historic England with their monitoring of monuments. The training will be all day, from 10am at Bishop Tawton village hall. The morning will consist of the theory, whilst the afternoon will be the practical side, at Codden Hill. We'll be frequenting the local pub for lunch. If you would be interested, please drop us an email at [berrycastle1@outlook.com](mailto:berrycastle1@outlook.com)

## Site Maintenance

Clinton Devon Estates have kindly helped us out, by clearing the vegetation within the site, allowing us to begin this year's maintenance programme.

If you are feeling energetic, then maybe one of our site maintenance mornings would be of interest to you. We intend to begin every Tuesday, 10am – 1pm, **from the 5<sup>th</sup> March**, where the focus will be on removing saplings from the monument. It's fairly easy work, for any age or fitness level and volunteers will be gratefully received. Just bring some gardening gloves and a flask and join our dedicated team in the fresh air. For those who are working during the week, we will be organising further weekend working parties on the **last Sunday of each month, starting on the 31<sup>st</sup> March, 10am – 1pm**. Please let us know, if you intend to join us, so we have an idea of numbers and also, we can let you know if we have to cancel. Details will be on our 'events' page on our website.

[www.berrycastlehuntshaw.com](http://www.berrycastlehuntshaw.com)

We held our AGM at the Cranford Inn. Thank you to everyone who supported this. We used this as an opportunity to share our ideas and discuss how supporters wanted the group to move forward, this coming year. If you weren't able to make the meeting, we would still value any comments or ideas you have. Please let us know your thoughts, by contacting us at [berrycastle1@outlook.com](mailto:berrycastle1@outlook.com)

## Election of Officers and Committee Members

Simon Carroll re-elected Chairman.

Audrey Alimo re-elected Vice Chair.

Linda Thomas re-elected as Treasurer.

Emma Barrow resigned as Secretary, this post to be managed jointly by Simon and Audrey.

Michael Barrow

Ann White

Phil White  
Adrian White  
Chris Hassall

### **Other dates for your diary**

A **historical walk around Torrington** on Saturday 6<sup>th</sup> April.

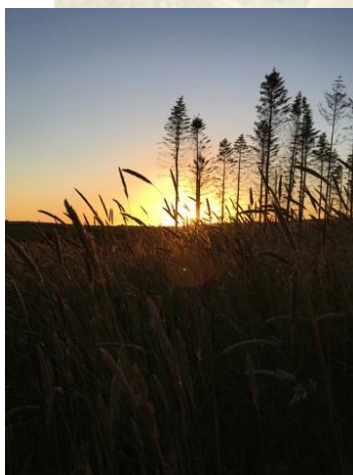
An **Easter Egg Hunt on Friday 19<sup>th</sup> April**, where children (and children at heart) can join us at Berry Castle, for an egg hunt and quiz. Bring a picnic lunch and make the most of the warmer Spring days. Eggs will be hidden around the site, each with a letter on. Find all the eggs, re-arrange the letters to form a phrase and collect your reward of chocolate eggs. We'll also be trialling our new quiz, based around the information boards. Be the first ones to try it out and tell us what you think.

From Torrington, take the turning for Gammaton, to Huntshaw Mill, where signs for parking will be displayed. Please don't attempt to park at Foxes Cross for this event. We look forward to seeing you there.

Proposed **Summer Dig** – W 3<sup>rd</sup> – W 10<sup>th</sup> July. Further details will follow.

Further dates will be added to our website, as the year progresses.

If you are interested in joining us for any of our walks and visits, please email us at [berrycastle1@outlook.com](mailto:berrycastle1@outlook.com) for times and further details.



### **Articles and photographs**

If you have any reviews of sites, visits or something which you think would be of interest to our supporters, please share it with us.

We'd also appreciate any photographs you may have taken, whilst at Berry Castle, which reflect the changing seasons, at the site. Please email them in.